

GOSPEL TIME

1. Go Down Mozes

arr. Wim Stalman

Introduction

Musical notation for the introduction of 'Go Down Mozes'. It consists of a single staff in bass clef with a key signature of one sharp (F#) and a common time signature (C). The melody starts with a quarter rest, followed by a series of quarter notes: G2, A2, B2, C3, D3, E3, F#3, G3, A3, B3, C4, D4, E4, F#4, G4, A4, B4, C5. The dynamics are marked *mf* at the beginning and *f* at the end.

6

Choral

Musical notation for the first choral line of 'Go Down Mozes'. It consists of a single staff in bass clef with a key signature of one sharp (F#) and a common time signature (C). The melody starts with a quarter rest, followed by a series of quarter notes: G2, A2, B2, C3, D3, E3, F#3, G3, A3, B3, C4, D4, E4, F#4, G4, A4, B4, C5.

13

Musical notation for the second choral line of 'Go Down Mozes'. It consists of a single staff in bass clef with a key signature of one sharp (F#) and a common time signature (C). The melody starts with a quarter rest, followed by a series of quarter notes: G2, A2, B2, C3, D3, E3, F#3, G3, A3, B3, C4, D4, E4, F#4, G4, A4, B4, C5.

20

Musical notation for the third choral line of 'Go Down Mozes'. It consists of a single staff in bass clef with a key signature of one sharp (F#) and a common time signature (C). The melody starts with a quarter rest, followed by a series of quarter notes: G2, A2, B2, C3, D3, E3, F#3, G3, A3, B3, C4, D4, E4, F#4, G4, A4, B4, C5.

2. Swing Low

arr. André Waignein

Introduction

Musical notation for the introduction of 'Swing Low'. It consists of a single staff in bass clef with a key signature of two sharps (F# and C#) and a common time signature (C). The melody starts with a quarter rest, followed by a series of quarter notes: G2, A2, B2, C3, D3, E3, F#3, G3, A3, B3, C4, D4, E4, F#4, G4, A4, B4, C5. The dynamics are marked *mf* at the beginning. There are also some dynamic markings (crescendo and decrescendo) indicated by hairpins.

Choral

6

Musical notation for the first choral line of 'Swing Low'. It consists of a single staff in bass clef with a key signature of two sharps (F# and C#) and a common time signature (C). The melody starts with a quarter rest, followed by a series of quarter notes: G2, A2, B2, C3, D3, E3, F#3, G3, A3, B3, C4, D4, E4, F#4, G4, A4, B4, C5.

11

Musical notation for the second choral line of 'Swing Low'. It consists of a single staff in bass clef with a key signature of two sharps (F# and C#) and a common time signature (C). The melody starts with a quarter rest, followed by a series of quarter notes: G2, A2, B2, C3, D3, E3, F#3, G3, A3, B3, C4, D4, E4, F#4, G4, A4, B4, C5.

16

Musical notation for the third choral line of 'Swing Low'. It consists of a single staff in bass clef with a key signature of two sharps (F# and C#) and a common time signature (C). The melody starts with a quarter rest, followed by a series of quarter notes: G2, A2, B2, C3, D3, E3, F#3, G3, A3, B3, C4, D4, E4, F#4, G4, A4, B4, C5.

3. Nobody Knows

arr. Wim Stalman

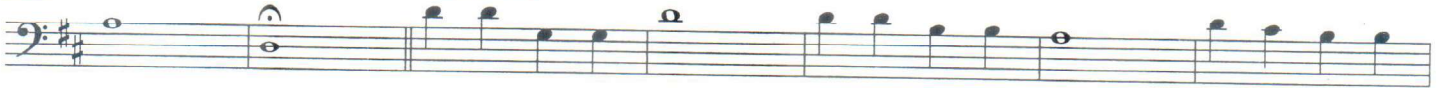
Introduction



mf

7

Choral



14



19



4. He's Got The Whole World

arr. Wim Stalman

Introduction



f

5

Choral



9

